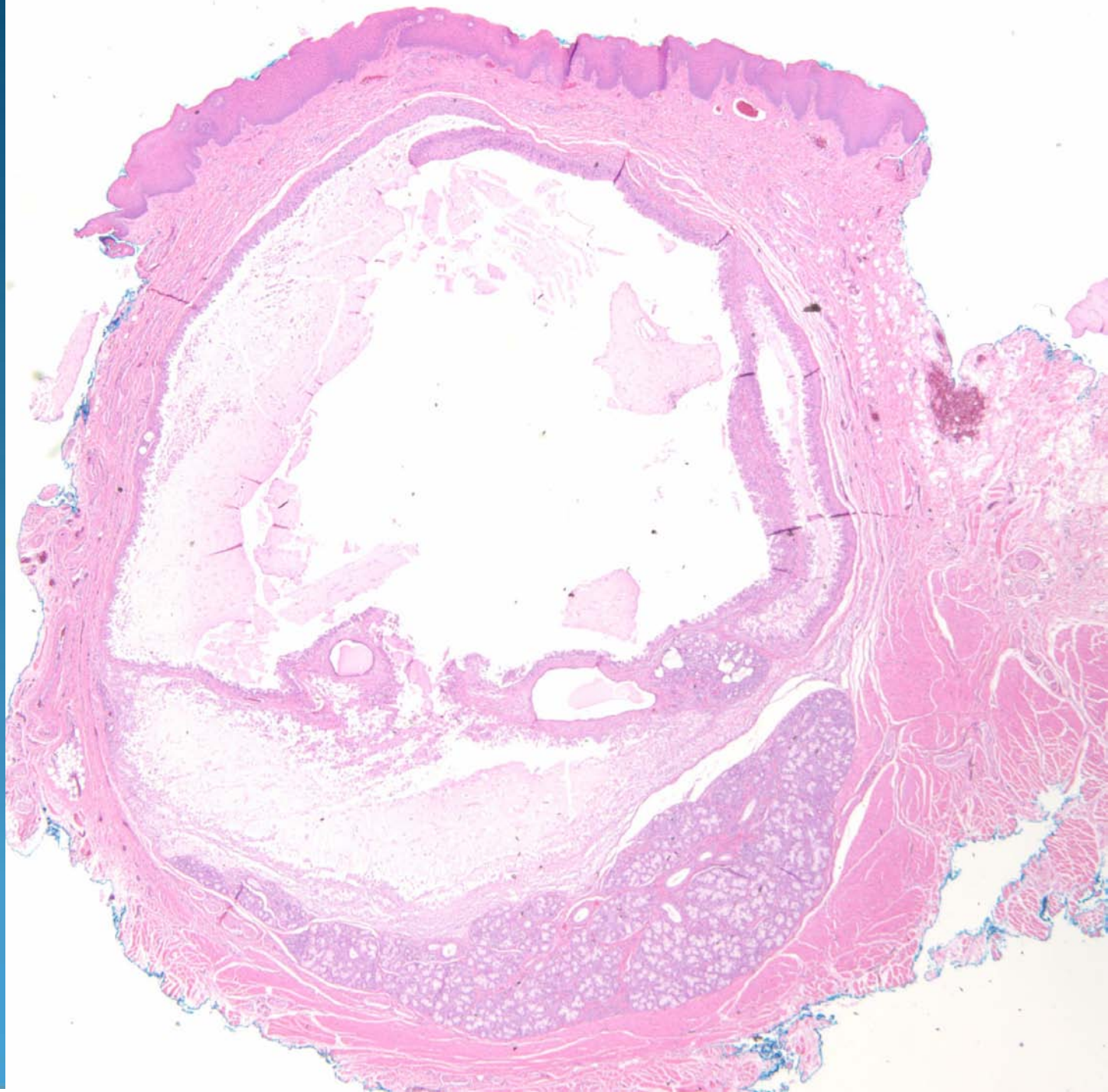
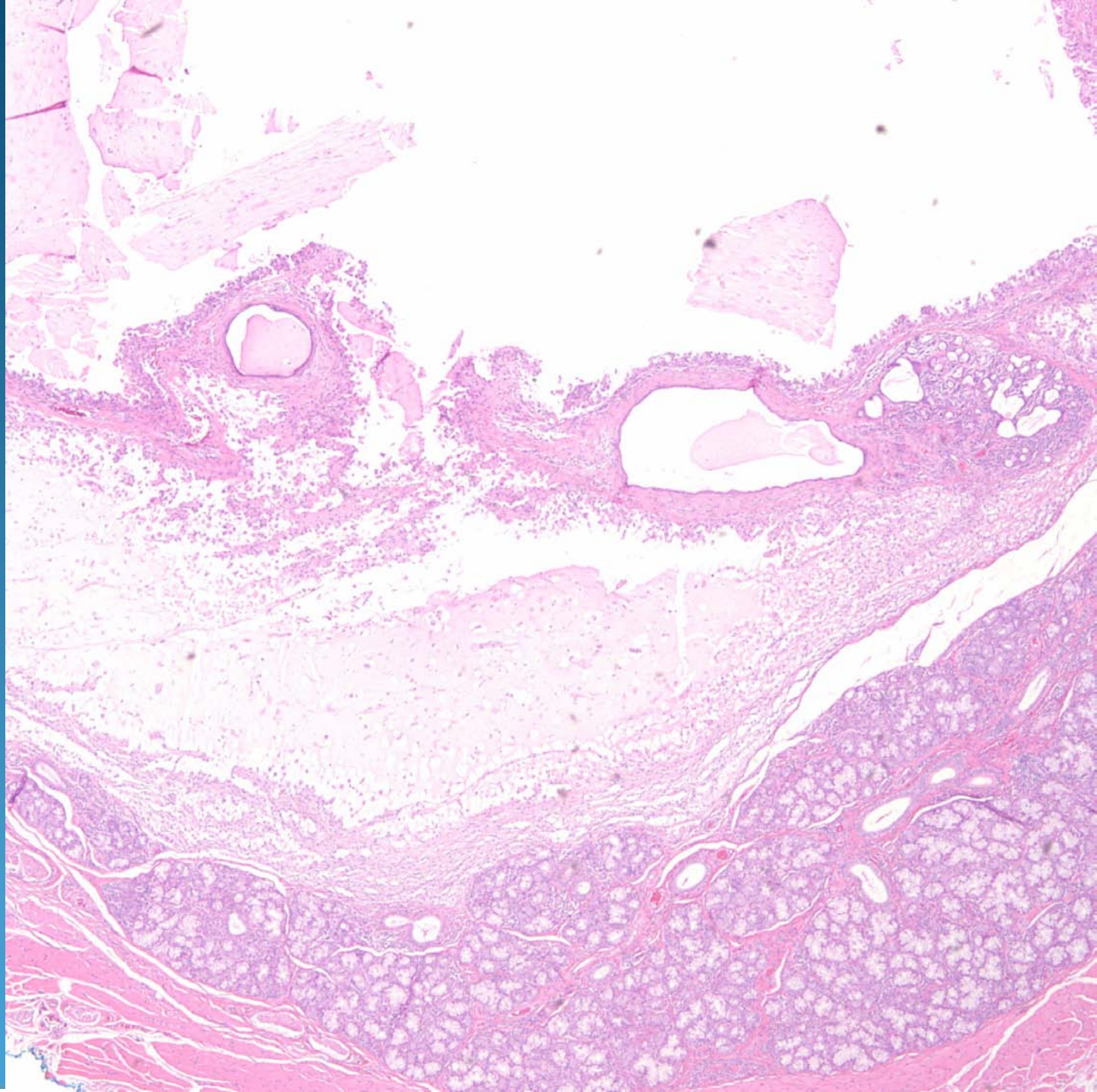
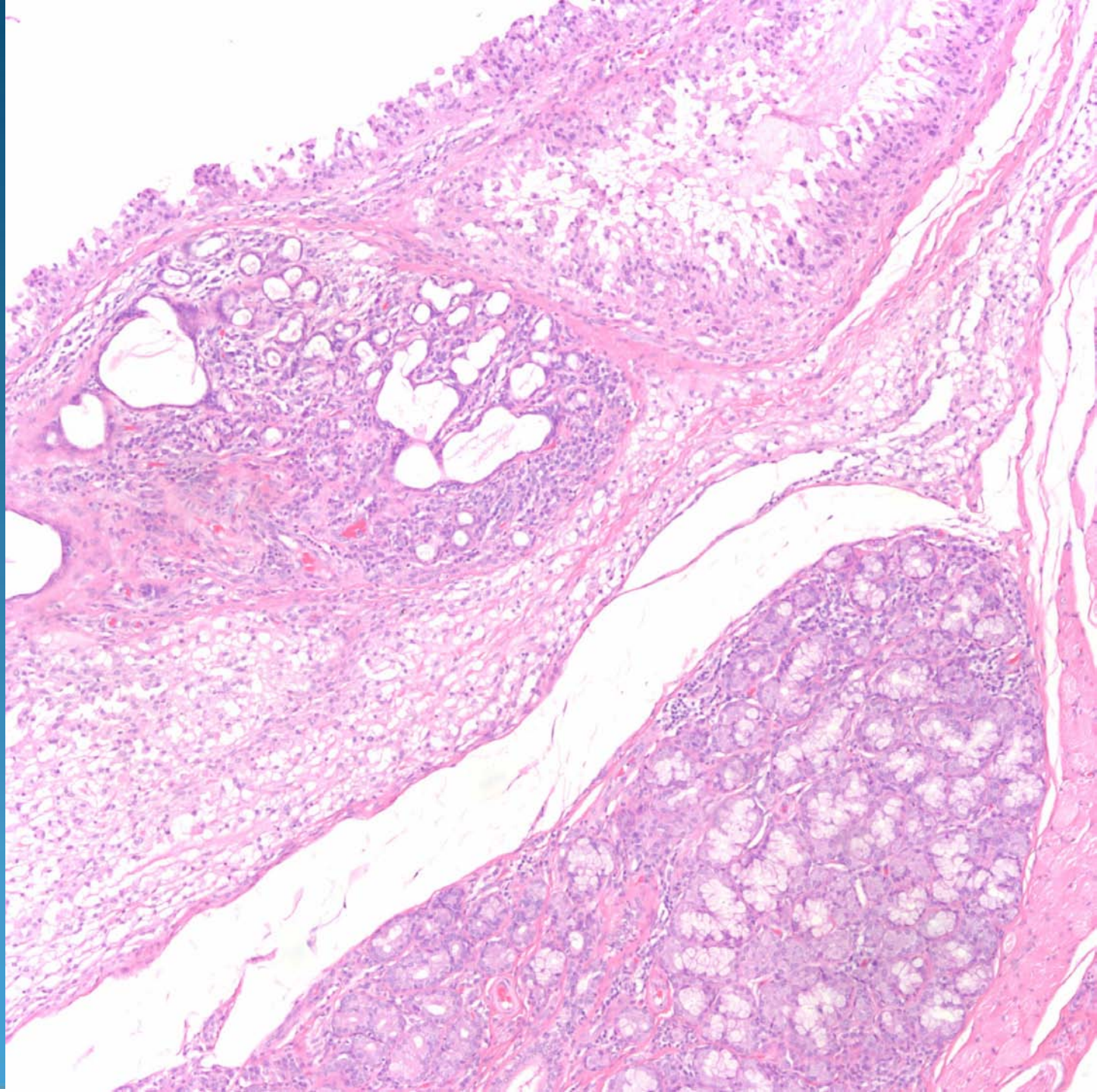


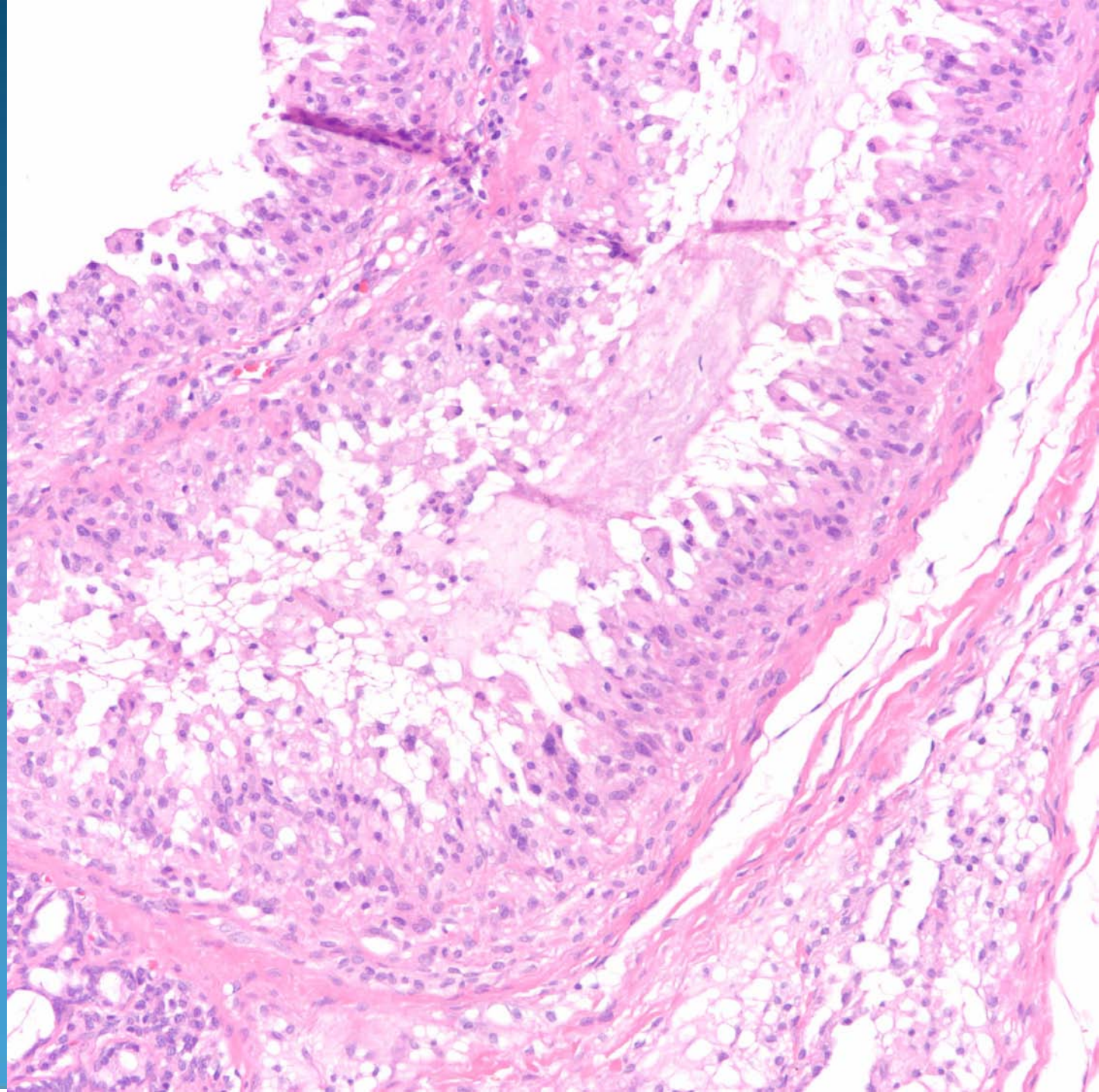
Dermatopathology Slide Review Part 65

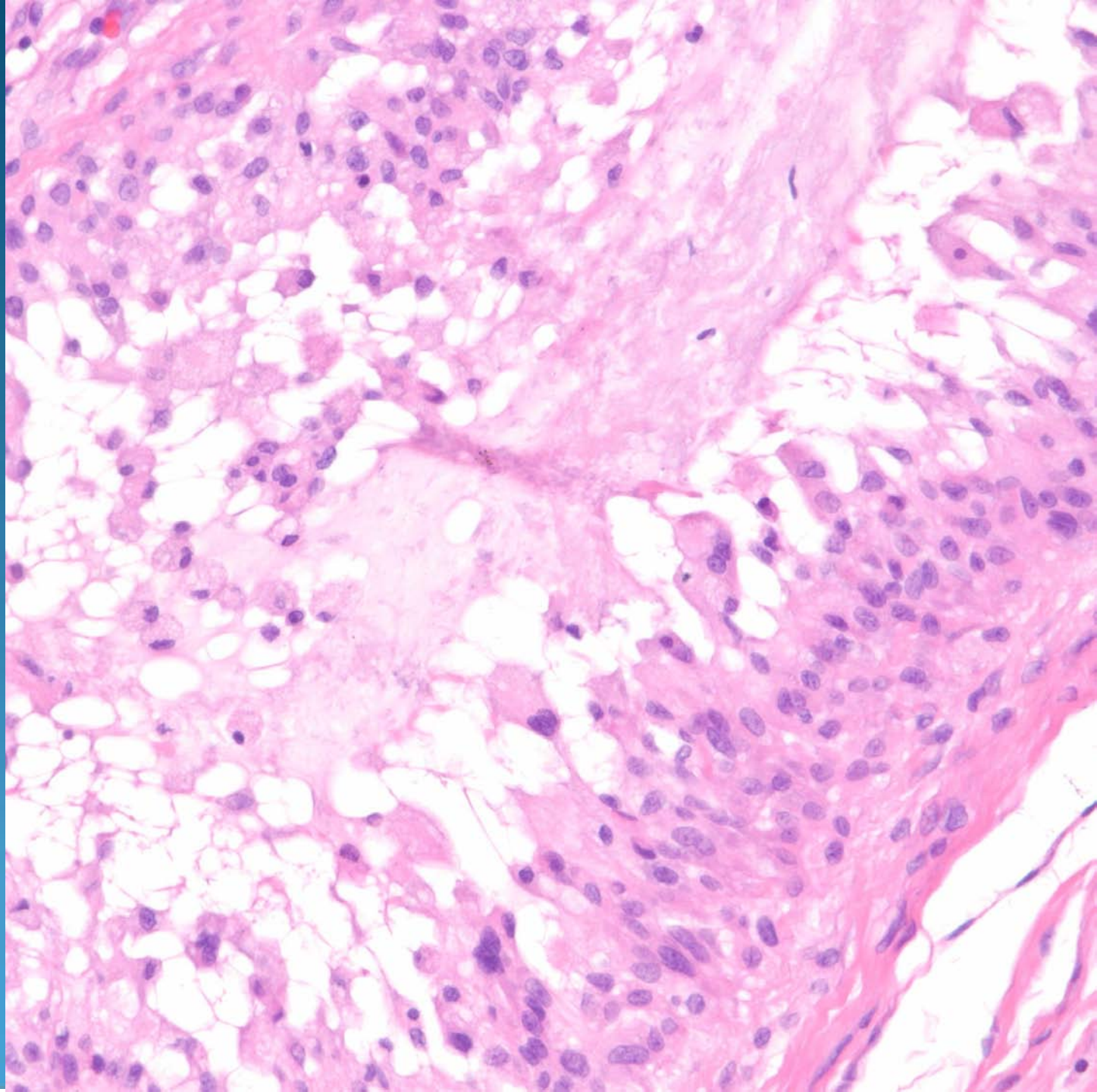
Paul K. Shitabata, M.D.
Dermatopathology Institute

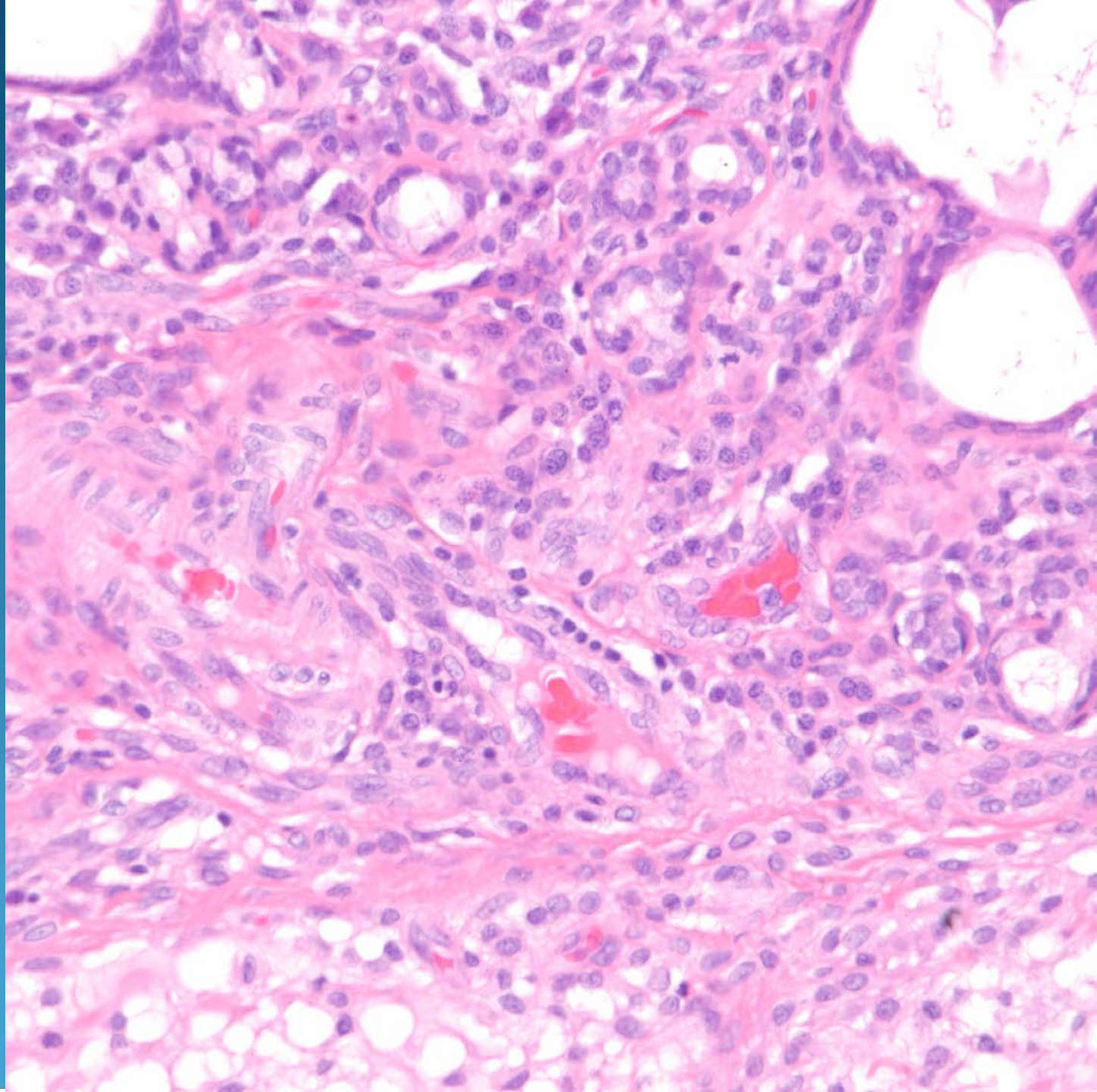






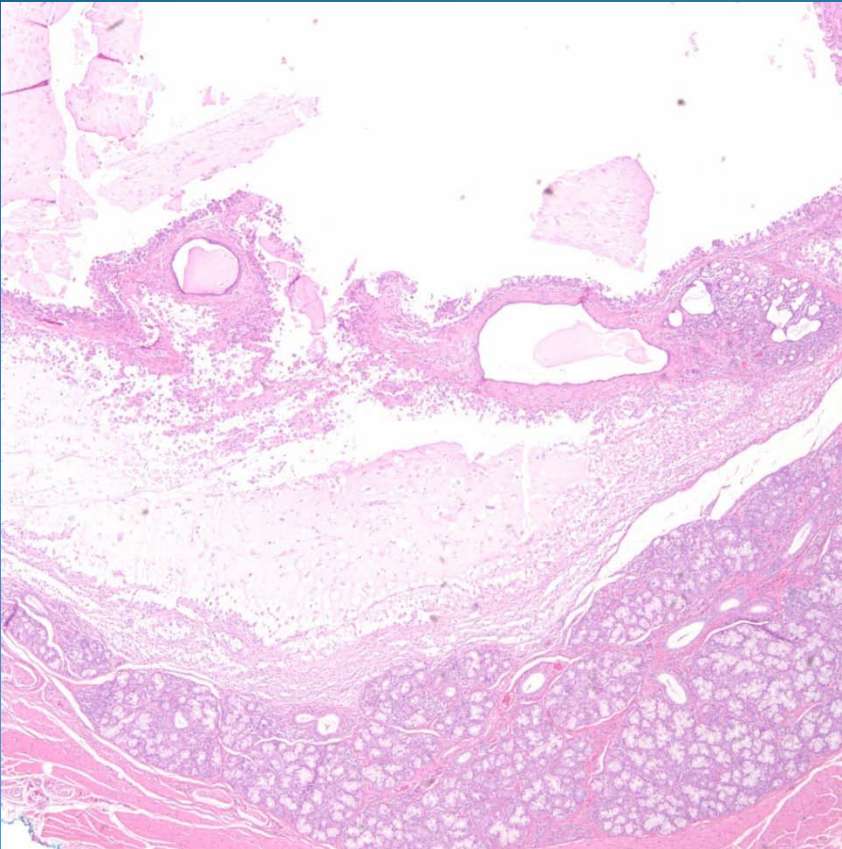




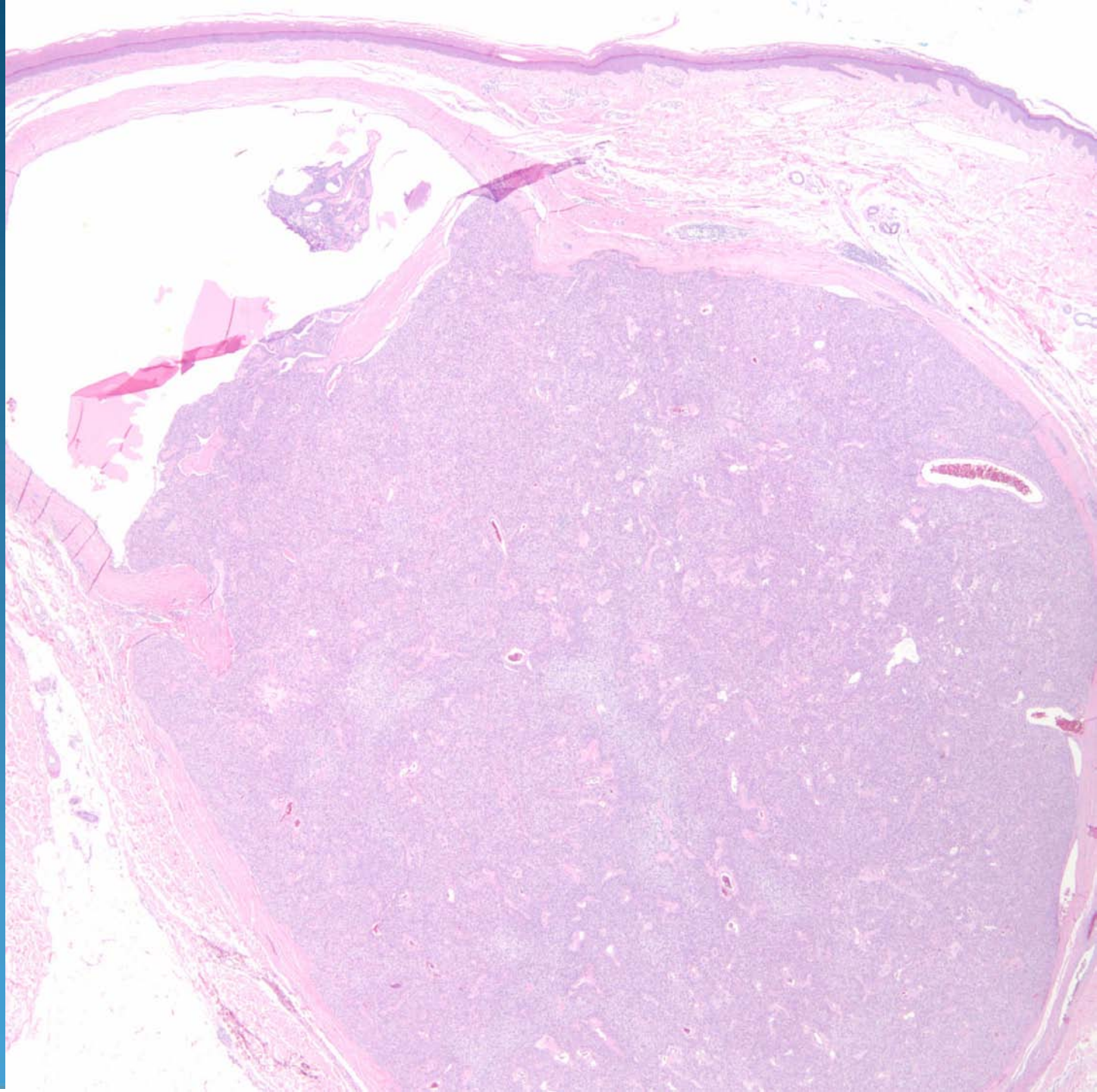


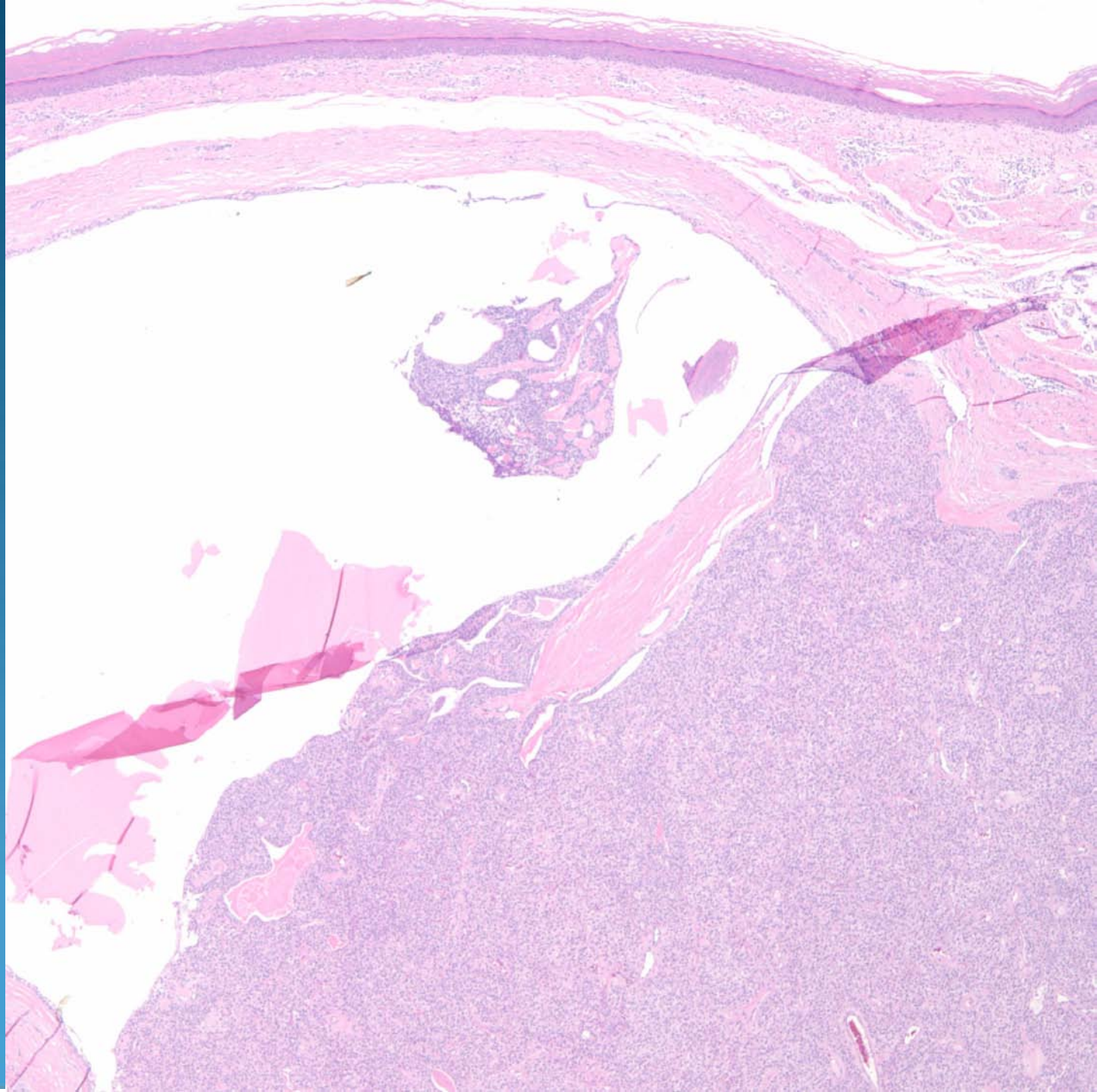
Mucocele

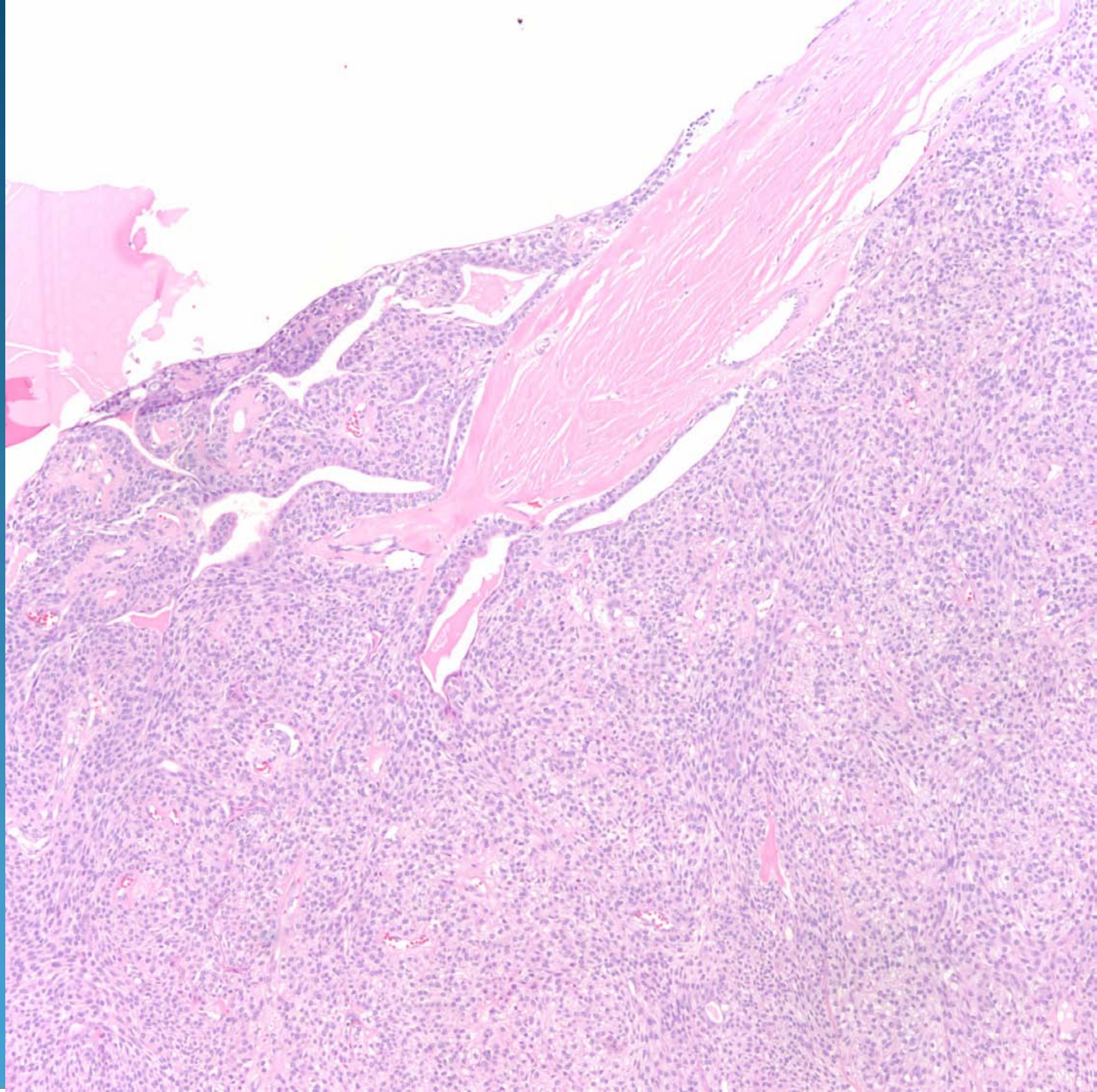
Pearls

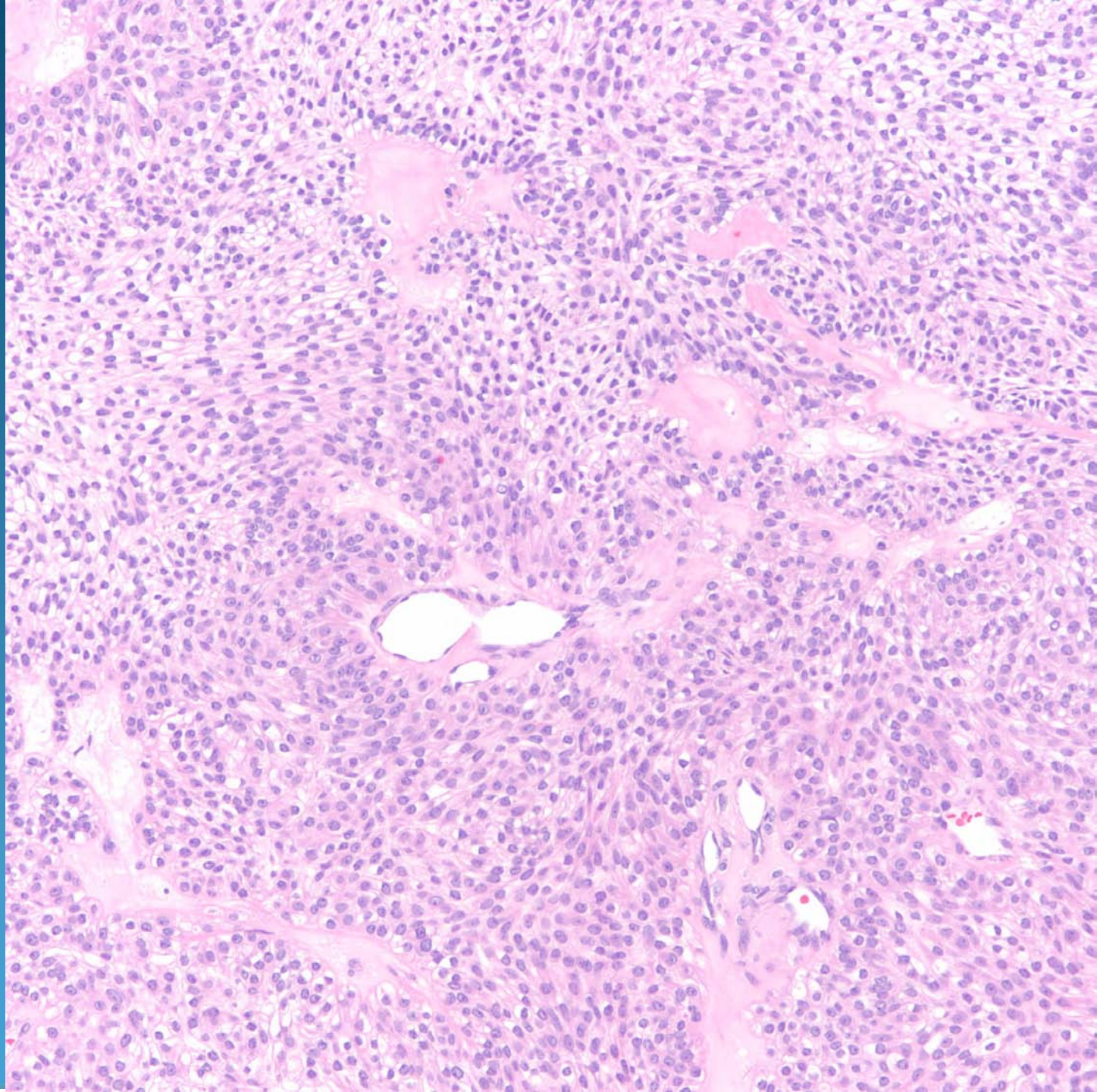


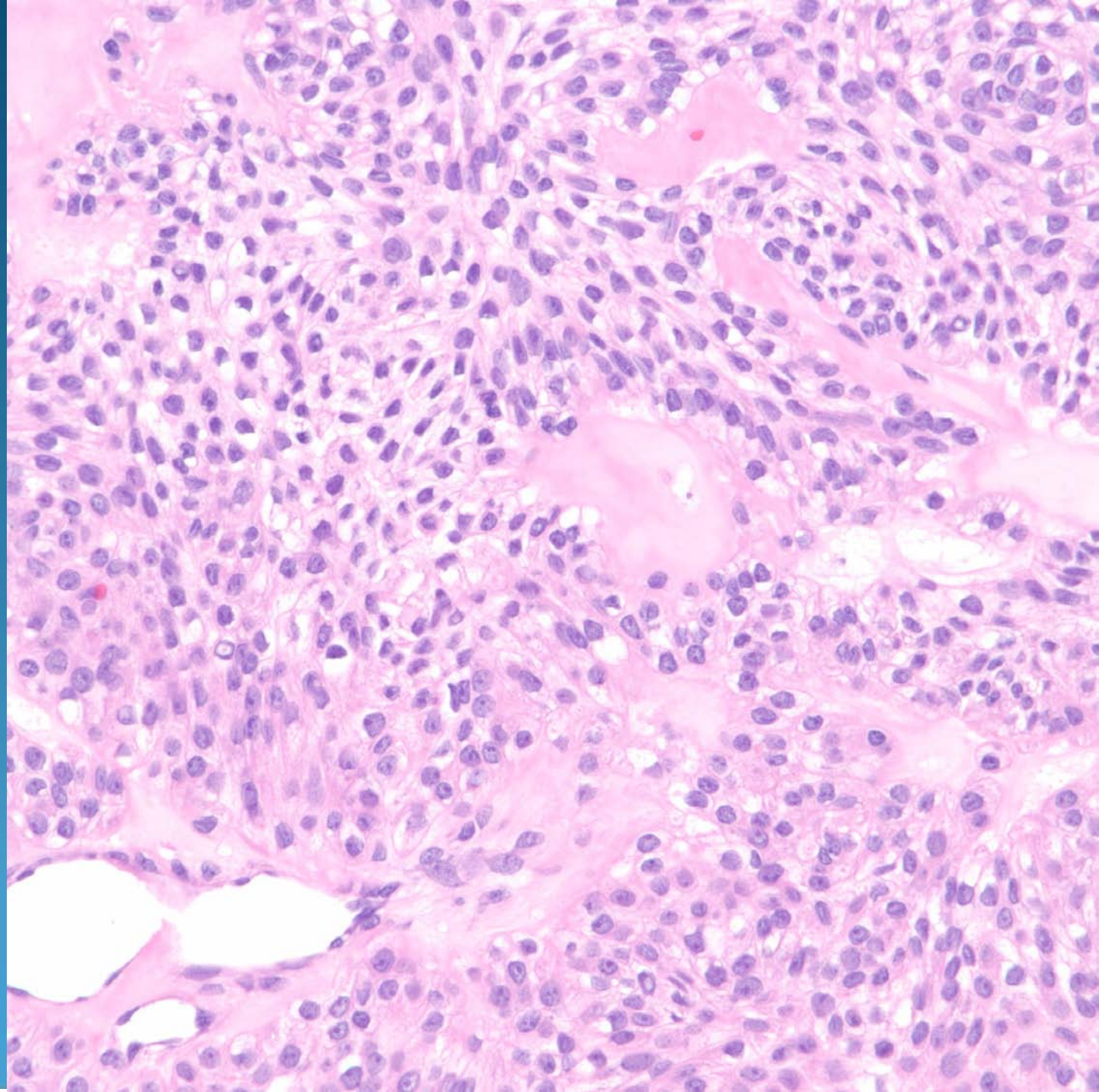
- Look for minor salivary glands and squamous mucosa-location is key!
- Pseudocyst lined by muciphages
- Extravasated mucin in stroma with muciphages





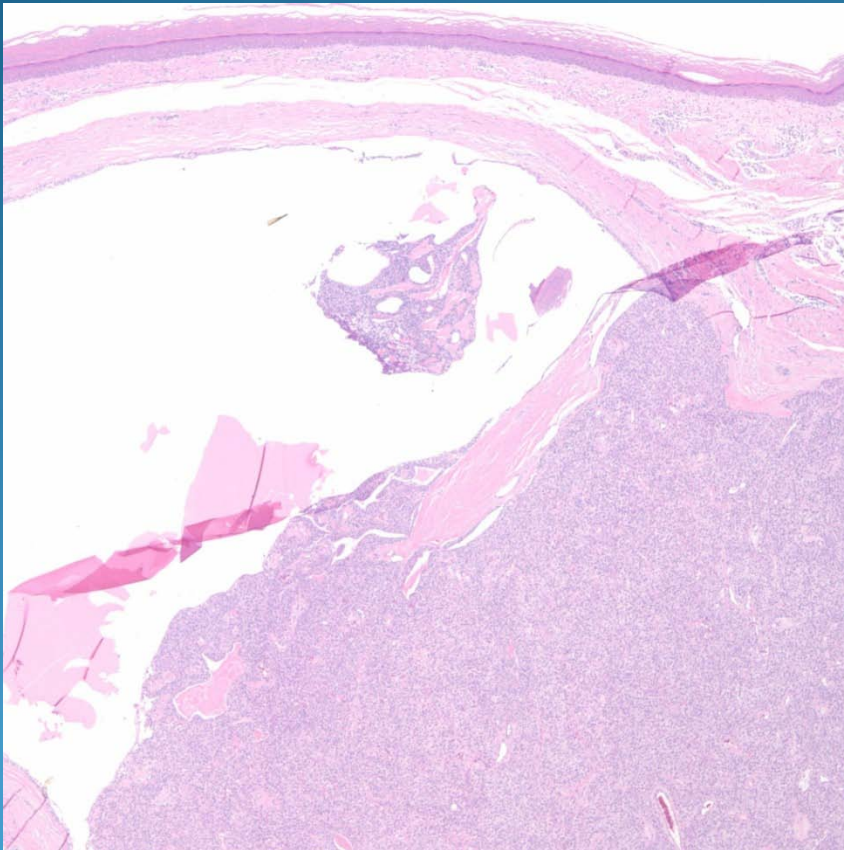




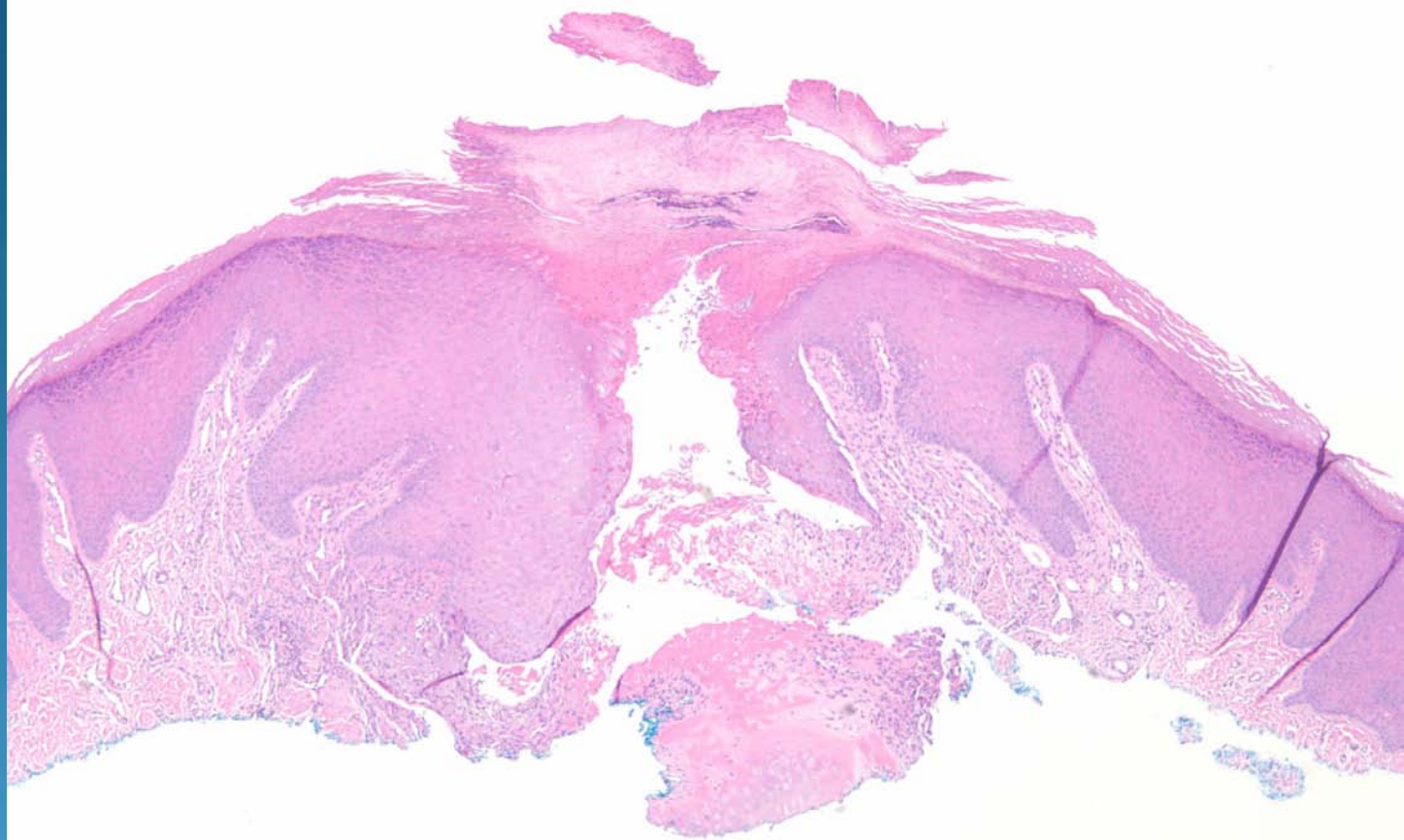


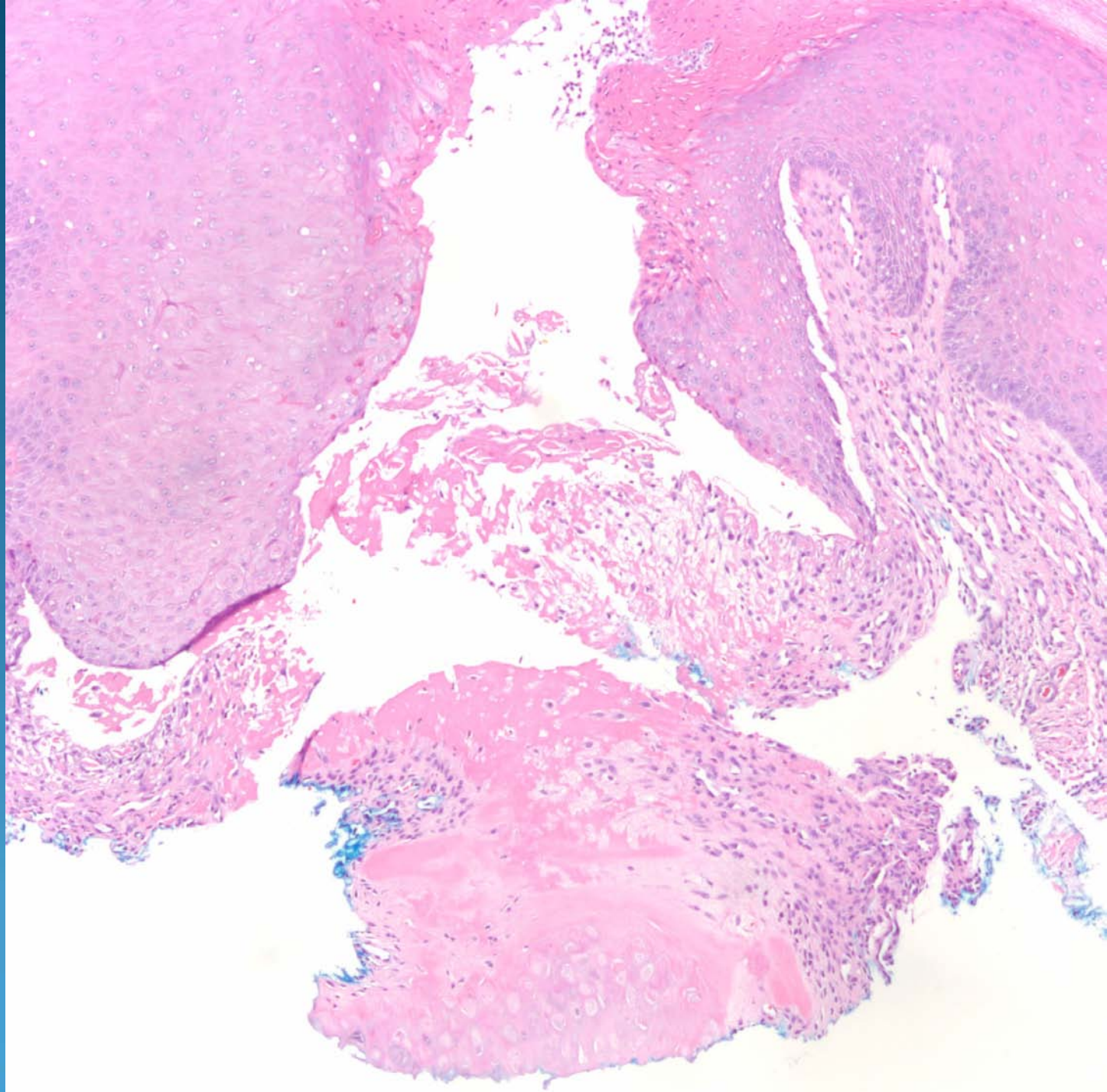
Nodular and Cystic Hidradenoma

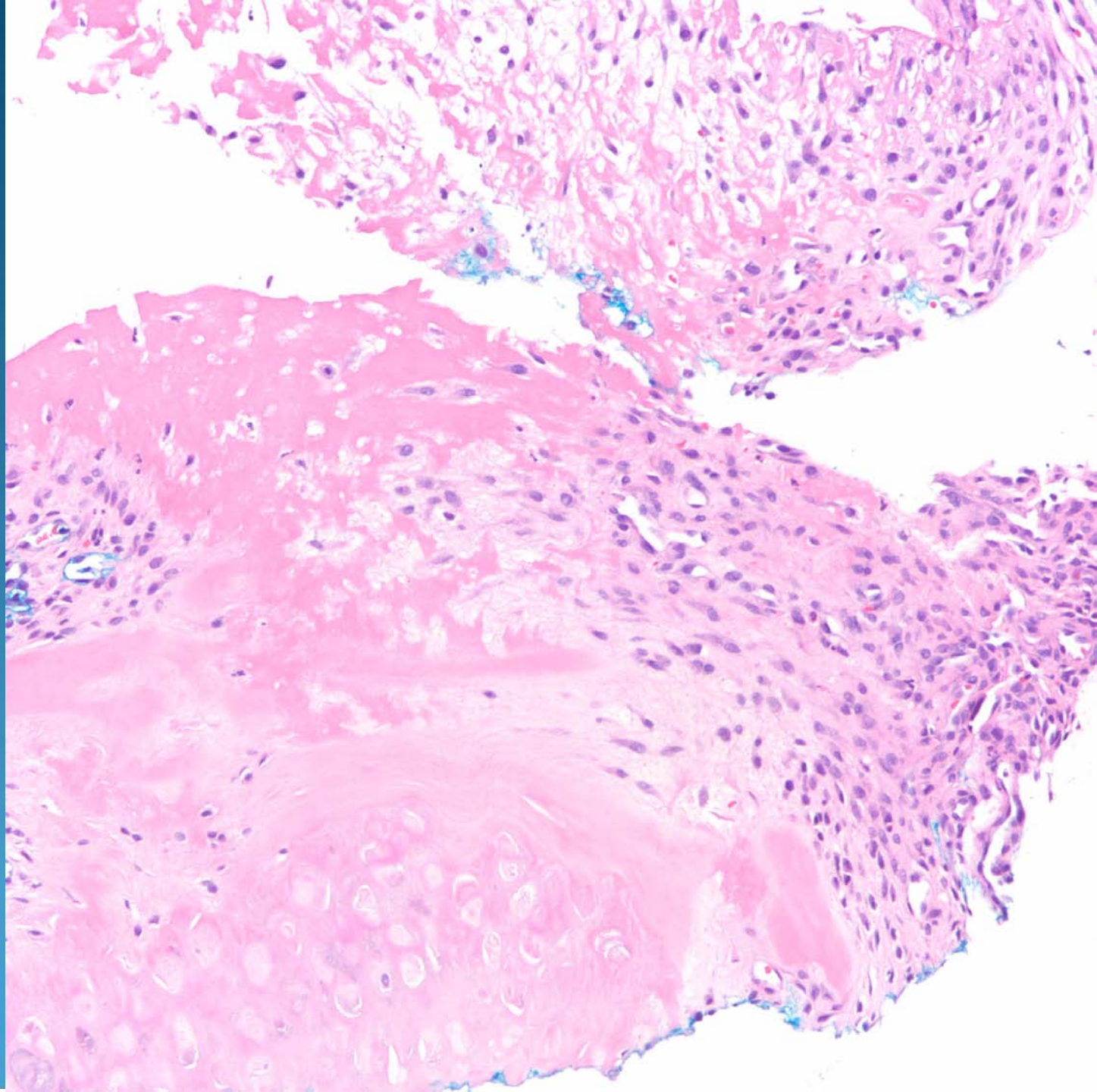
Pearls

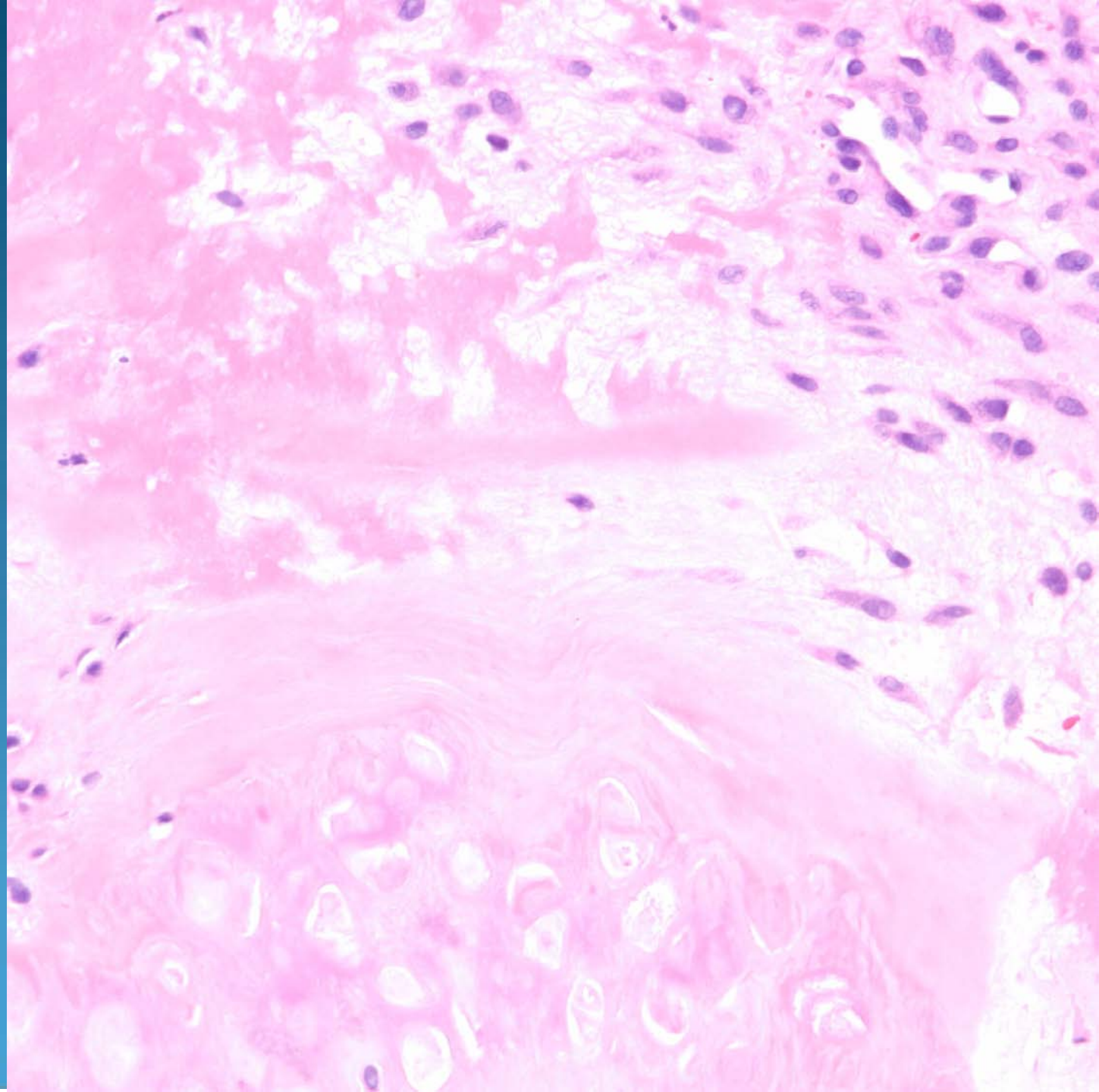


- Circumscribed dermal nodule with varying solid and cystic change
- Squamous epithelial cells with clear cell changes admixed with small vessels
- Hyalinization around vessels



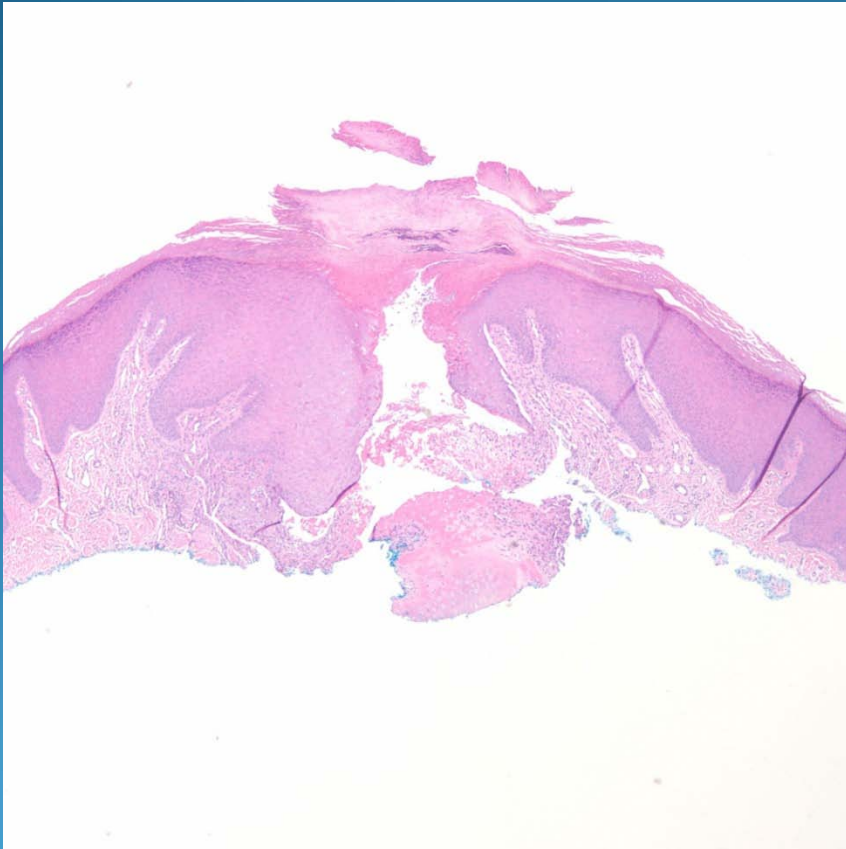




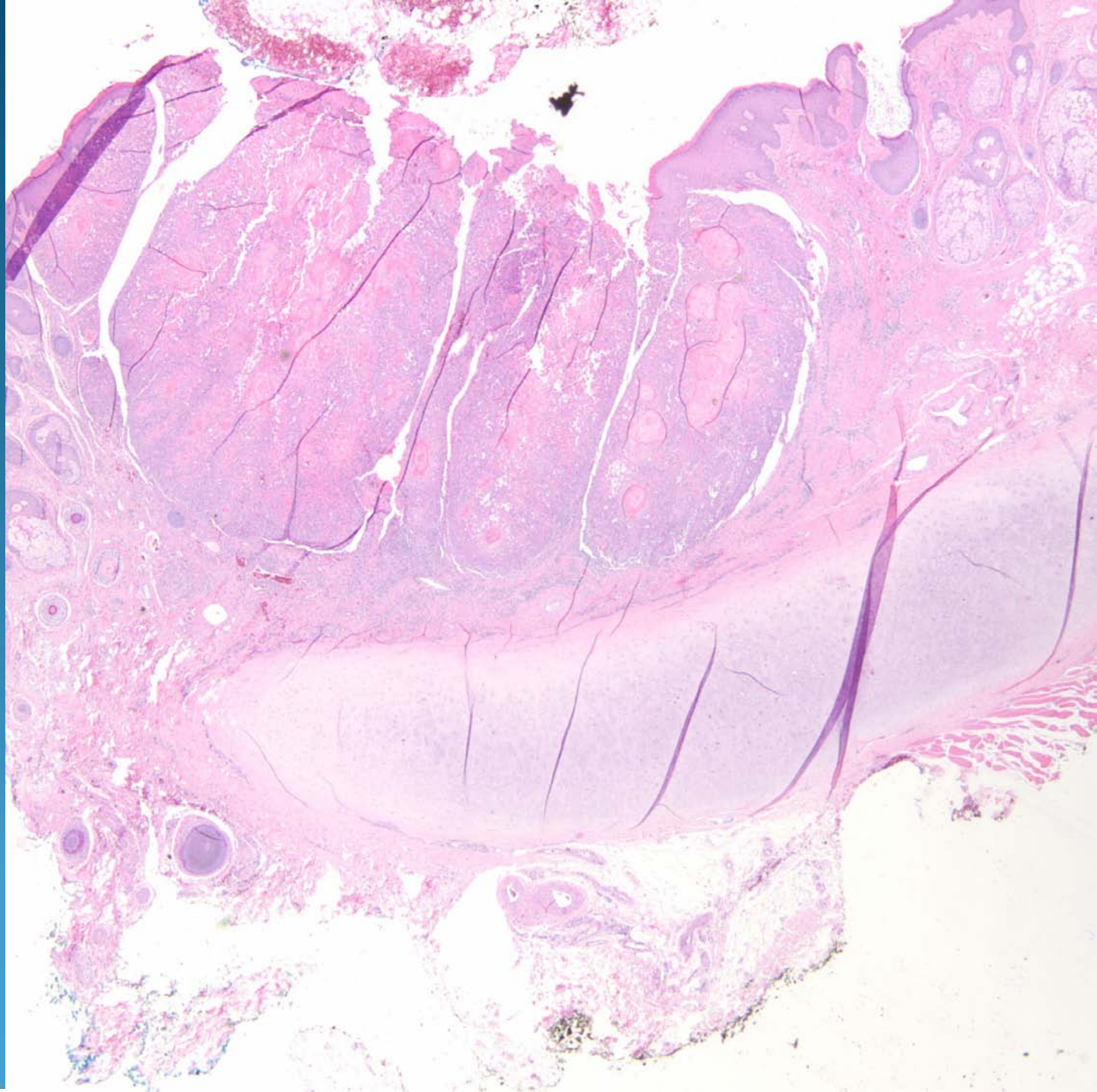


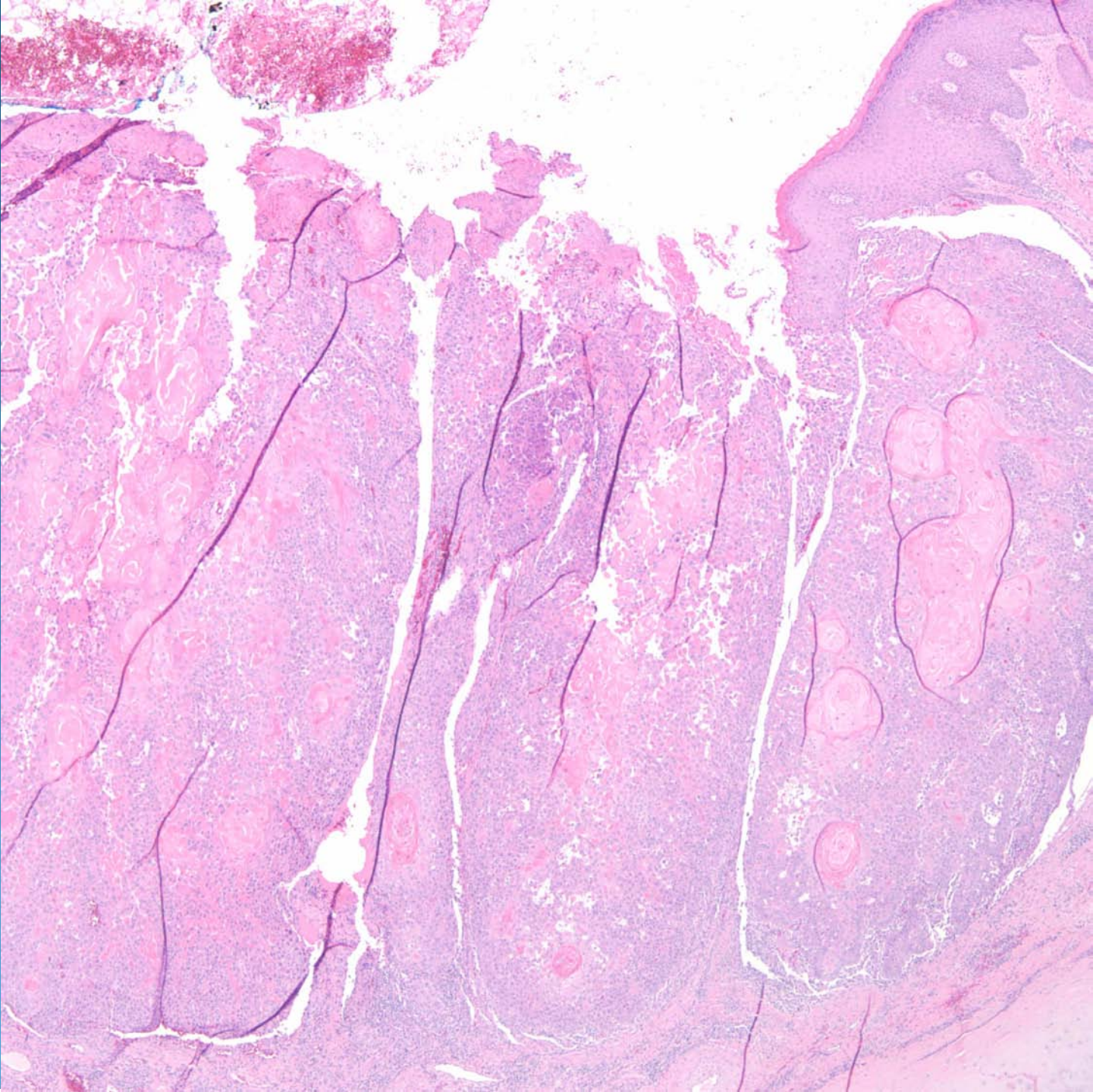
Chondrodermatitis Nodularis Helicis

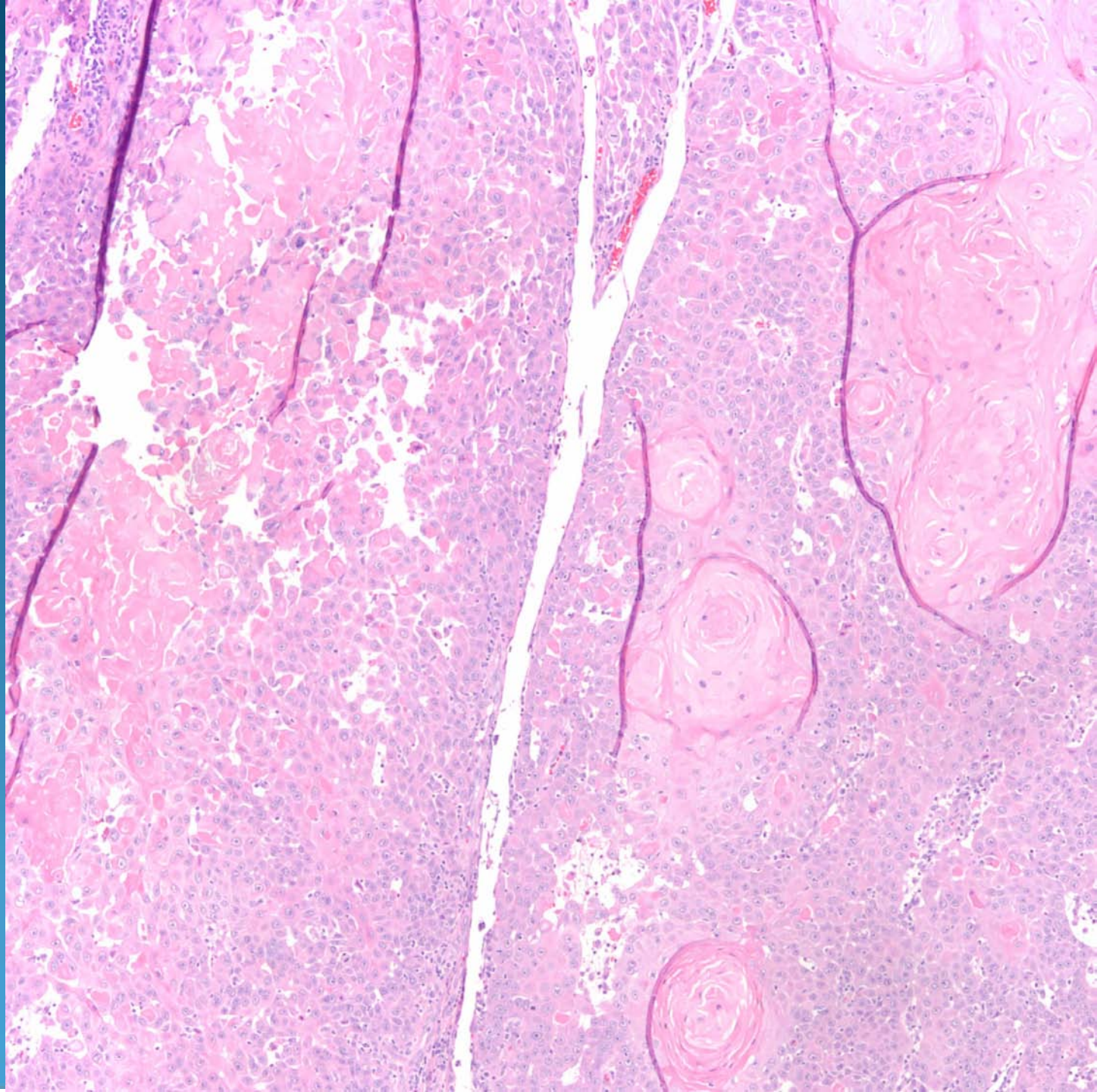
Pearls

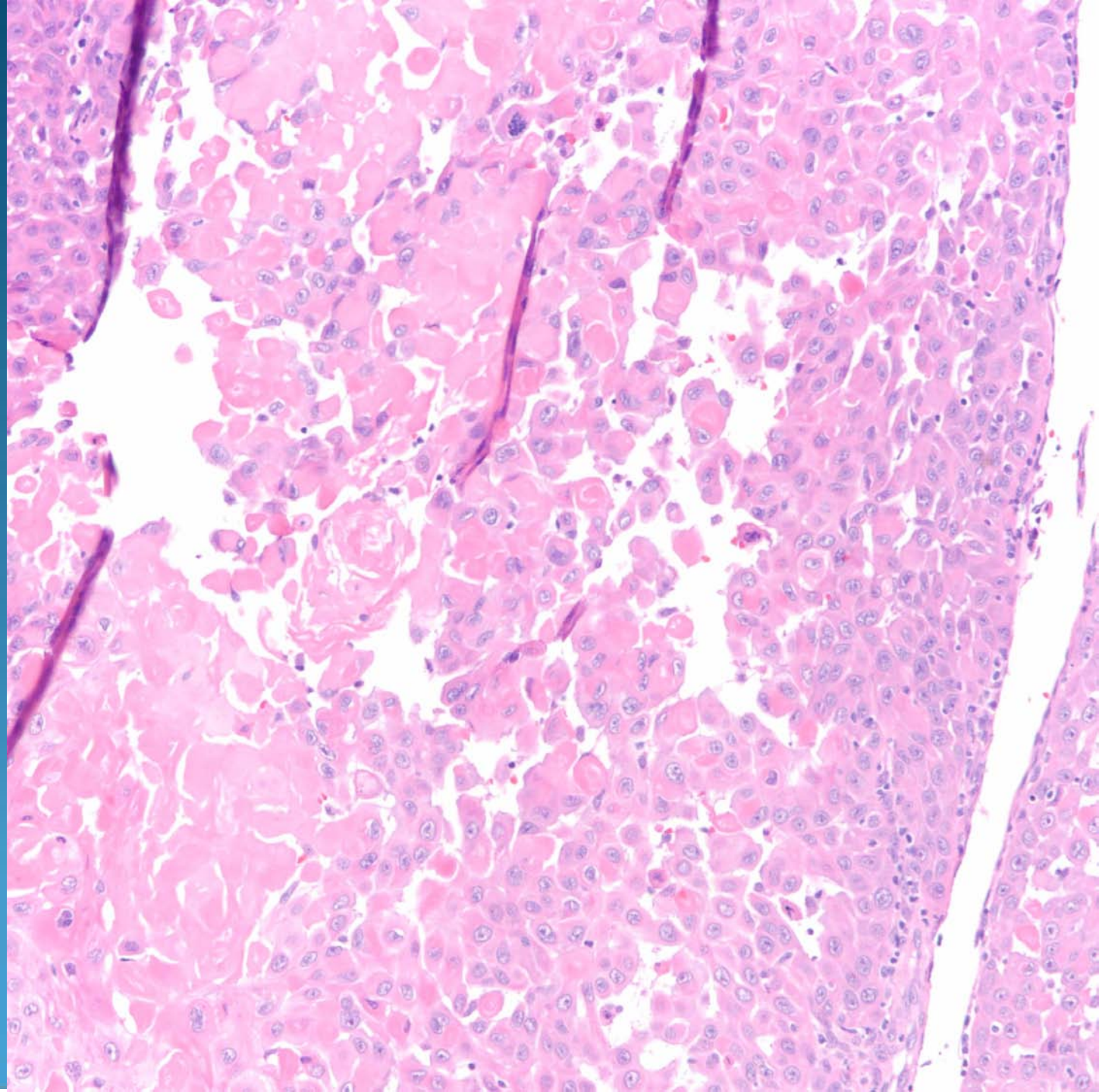


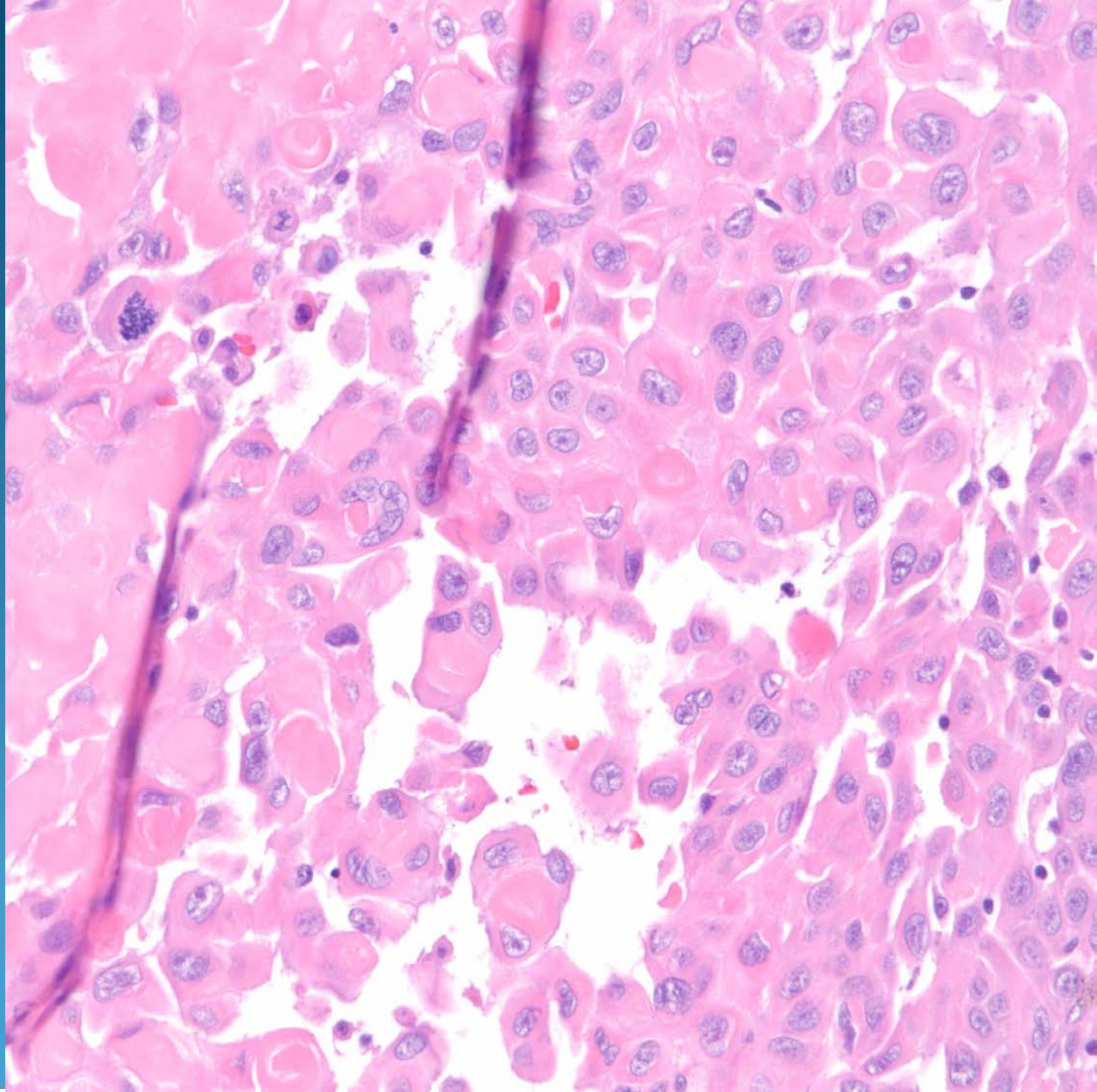
- Usually epidermal hyperplasia with scar
- Look for cartilage with eosinophilic degenerative changes
- May see proliferation of perichondrocytes within the dermis





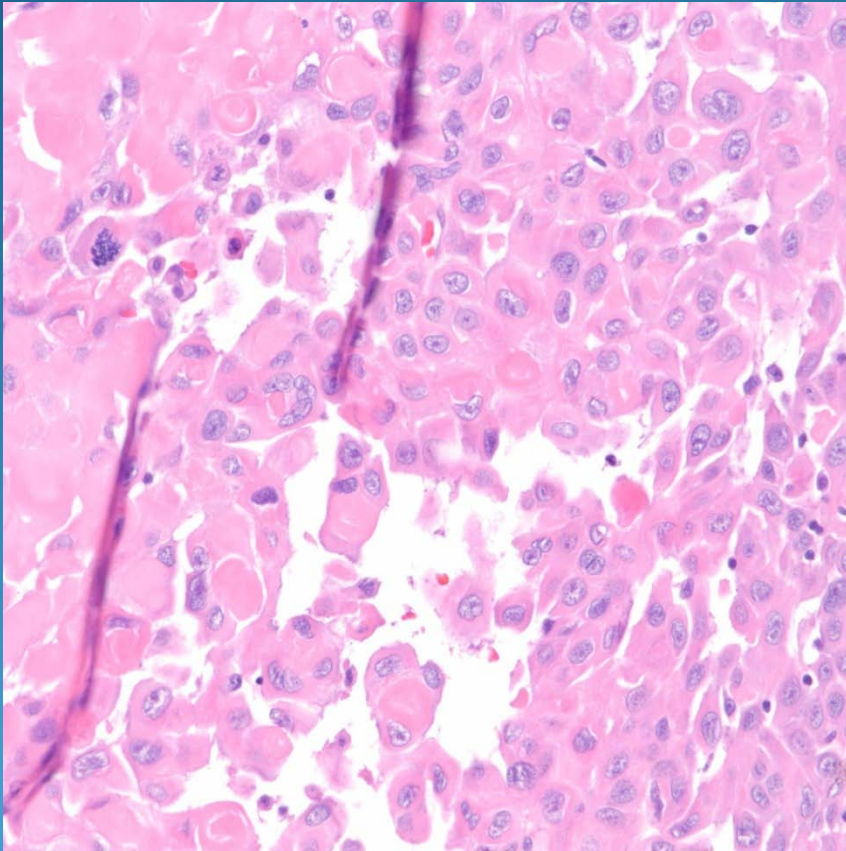




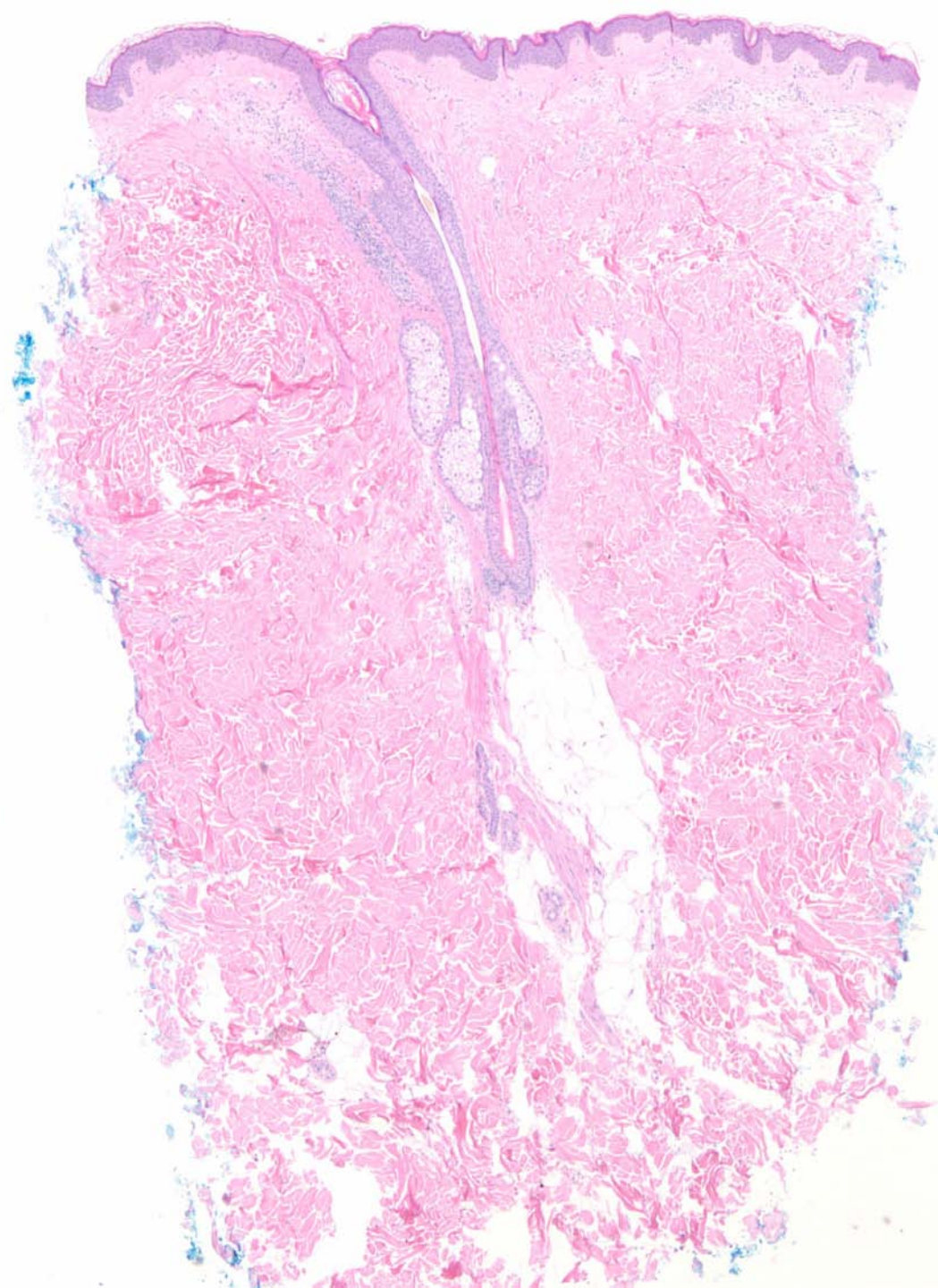


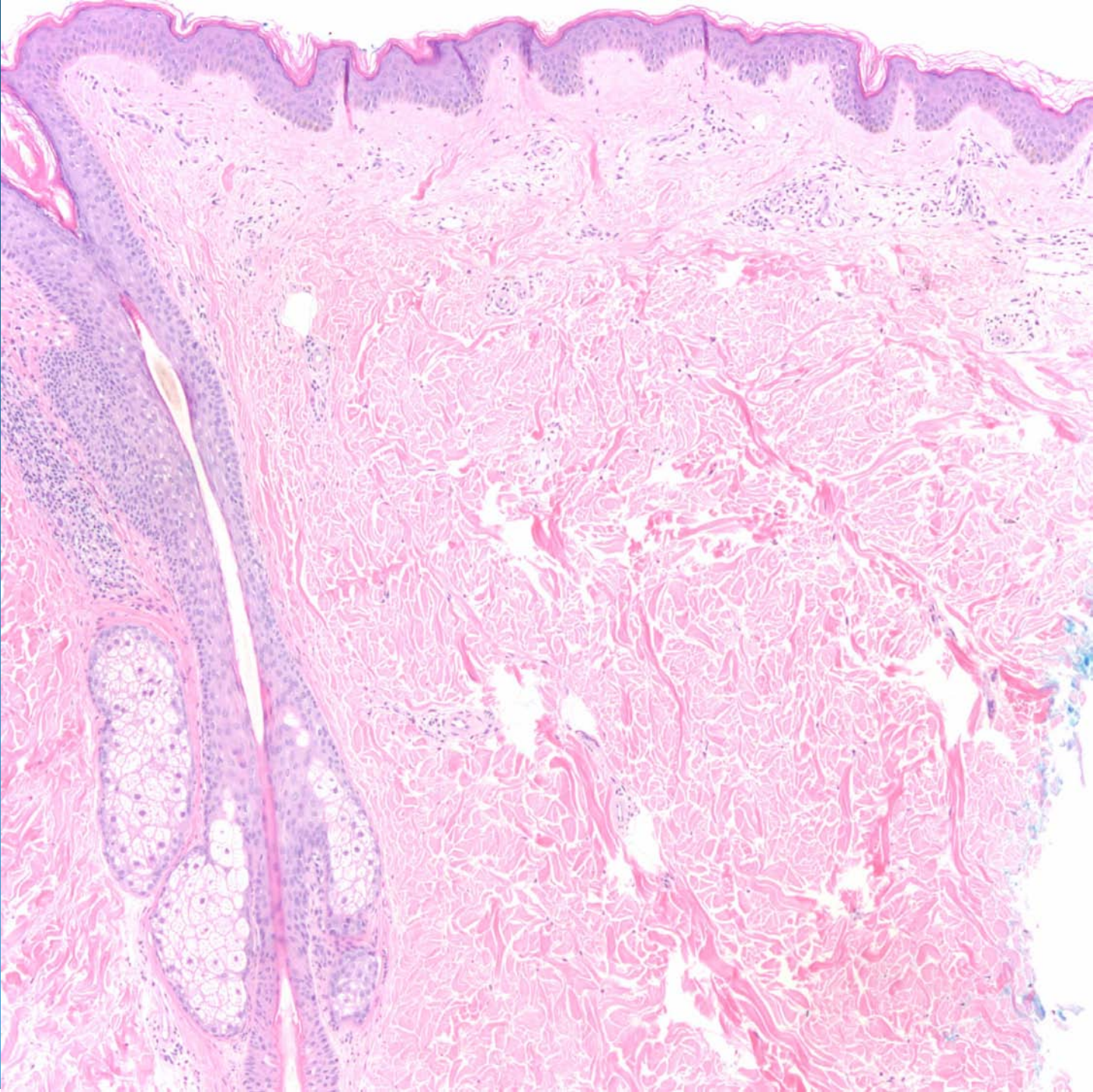
Invasive Squamous Cell Carcinoma with Acantholytic Features

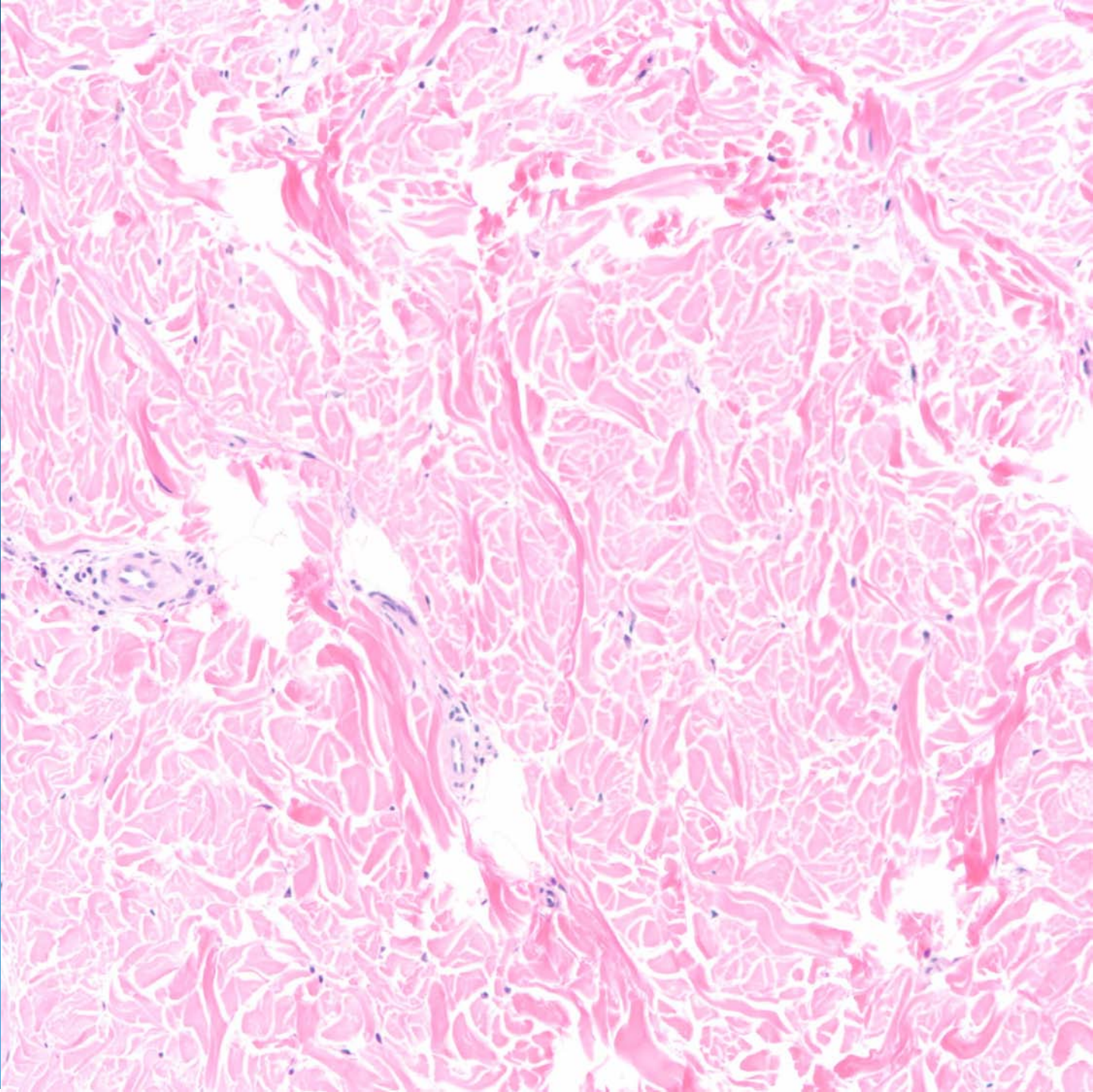
Pearls

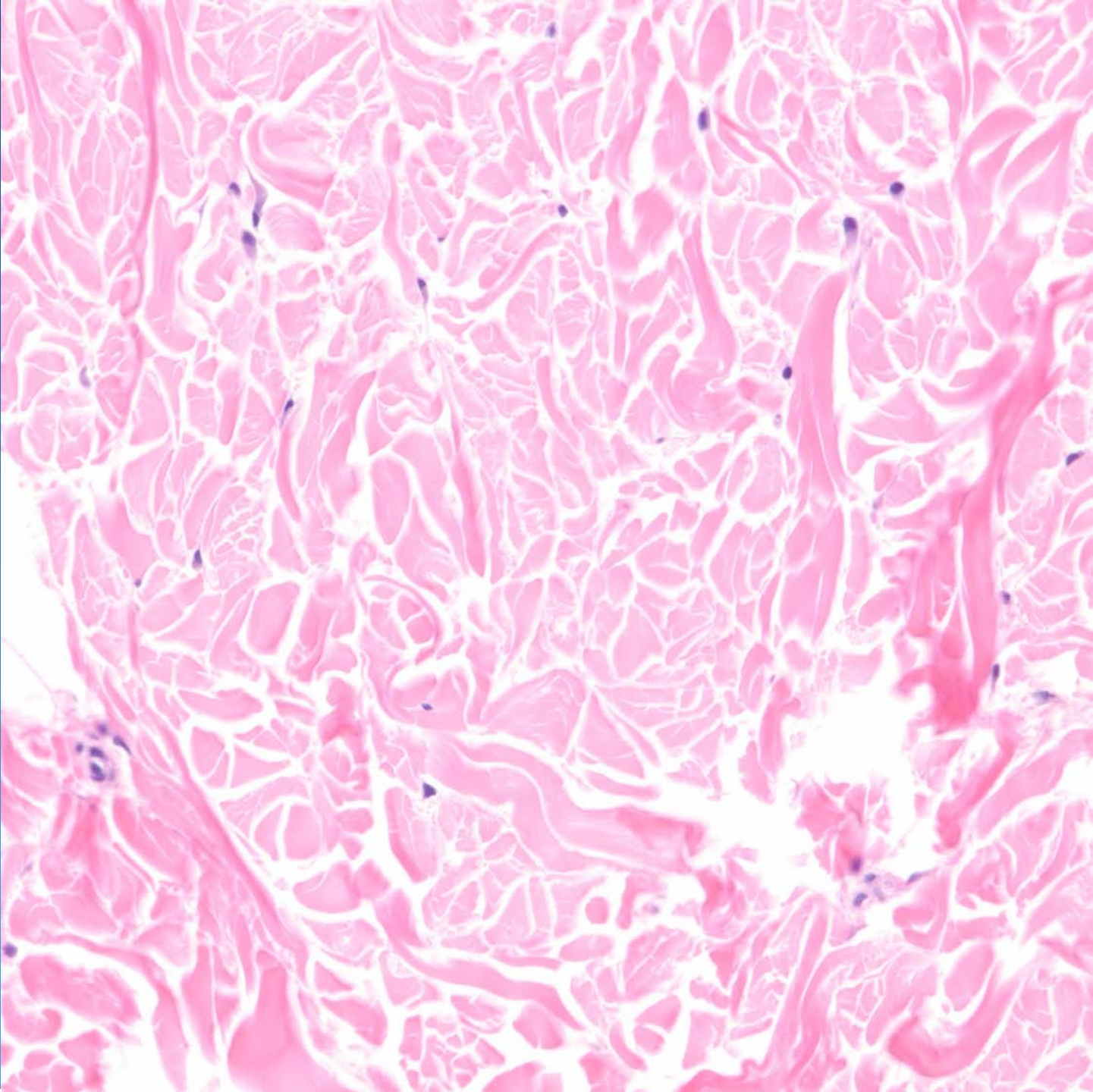


- Squamous cell carcinoma with discohesion between malignant keratinocytes
- Invasive pattern with squamous pearls and dyskeratosis
- Look for cytologically malignant keratinocytes



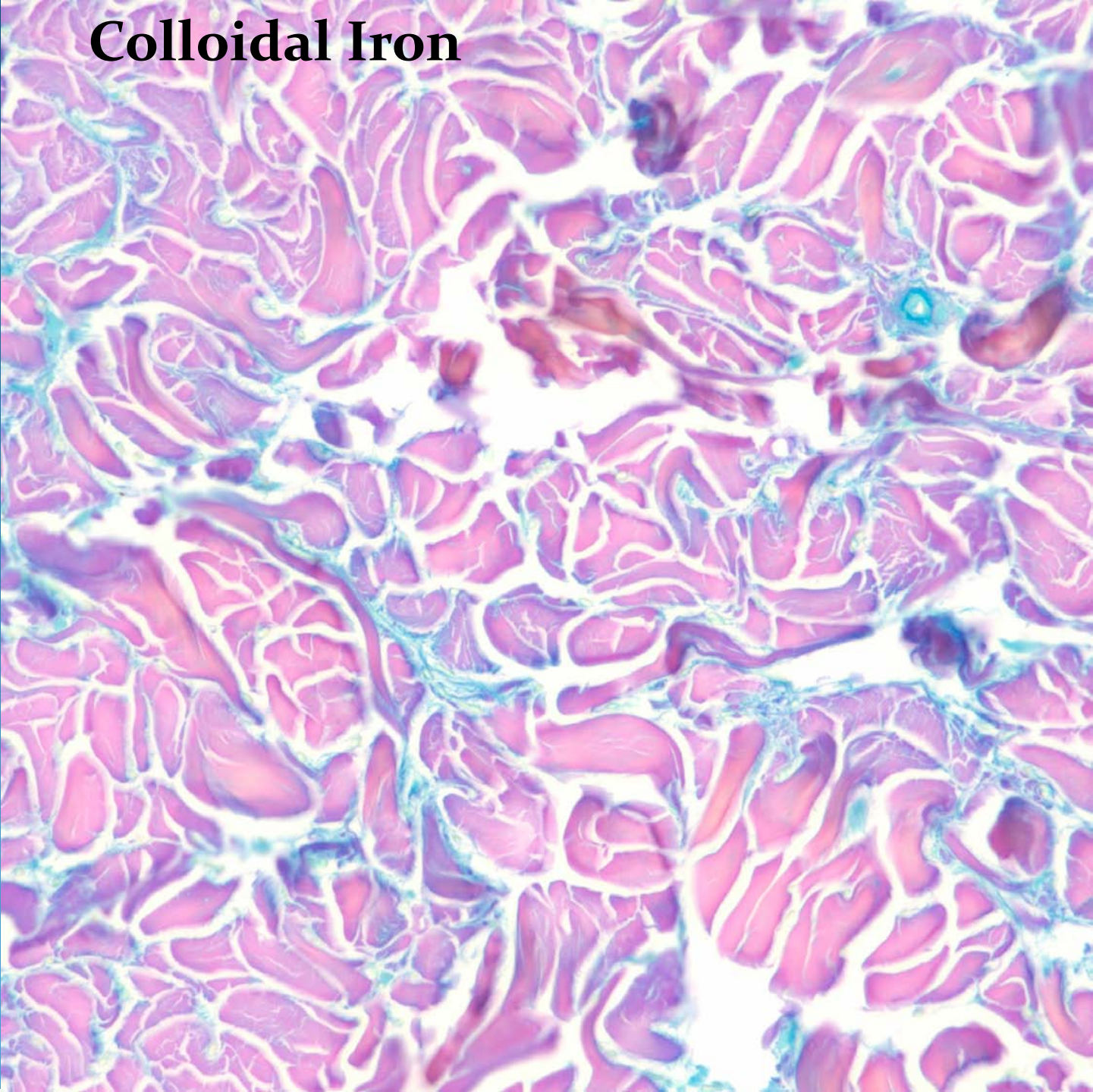




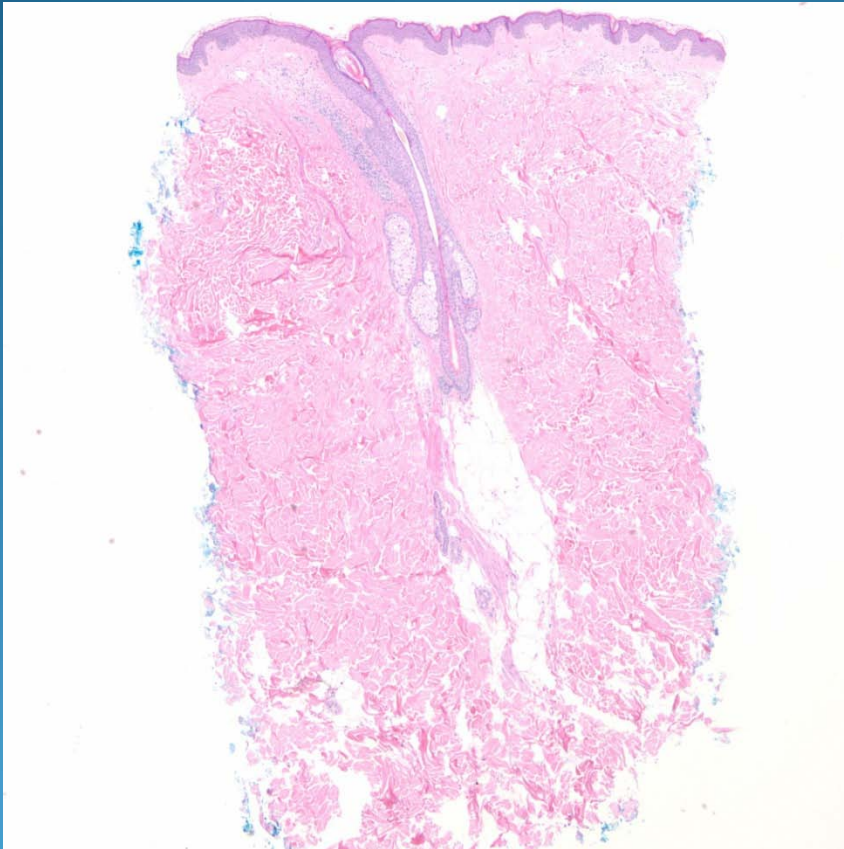


Scleredema

Colloidal Iron



Pearls



- Square biopsy sign indicative of a sclerotic or infiltrative process
- Minimal to absent inflammatory cell infiltrate
- May see slit-like separation of thickened collagen bundles within reticular dermis
- Confirm my mucin stains (colloidal iron, Alcian blue/PAS, mucicarmine)